

E-resources from home

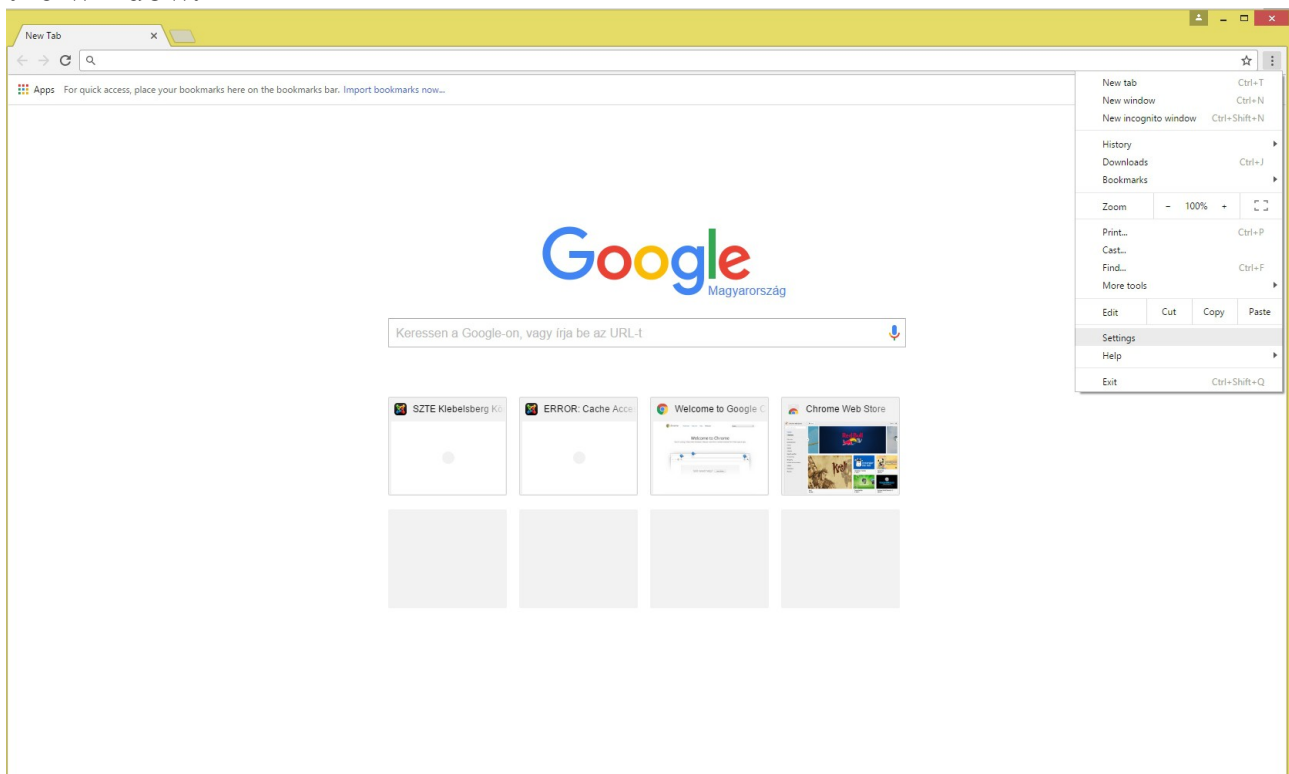
From 2010 May the University Library provides a new service to support instruction, research and studying at the University. With the help of a proxy server the electronic resources acquired by the Library plus the national services accessible through the Library will be available outside the Library and the University for students, faculty members, researchers and staff of the University who are registered users of the Library.

In order to access the online resources from remote, e.g. home computers, certain settings of the browser should be changed. Please note: after these changes other public web pages cannot be used in that browser, only the electronic resources available through the Library. If parallelly you wish to use other sources you should open an other browser.

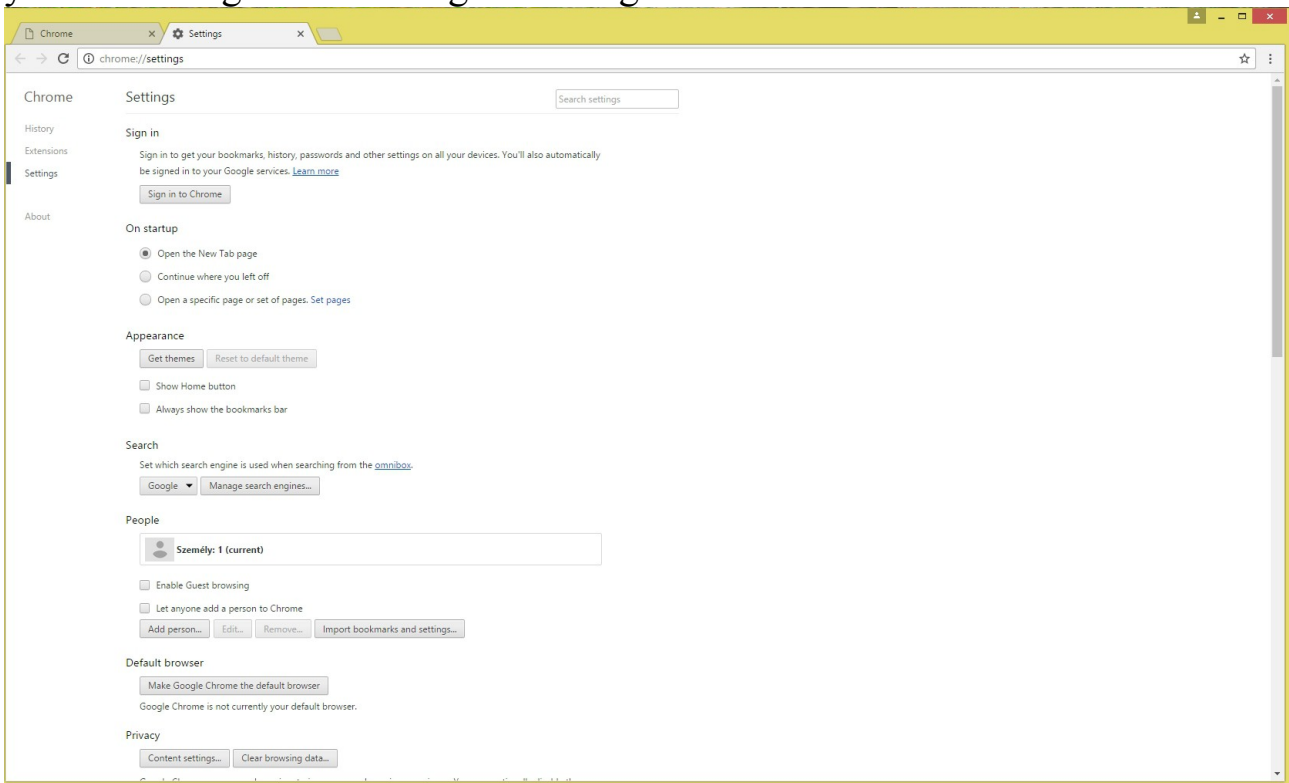
It is important that in the settings of your other browser (special settings > network > settings) 'No proxy' should be checked to make sure you can open other windows.

If you wish to access the public sources in the original browser you have to reset the proxy settings.

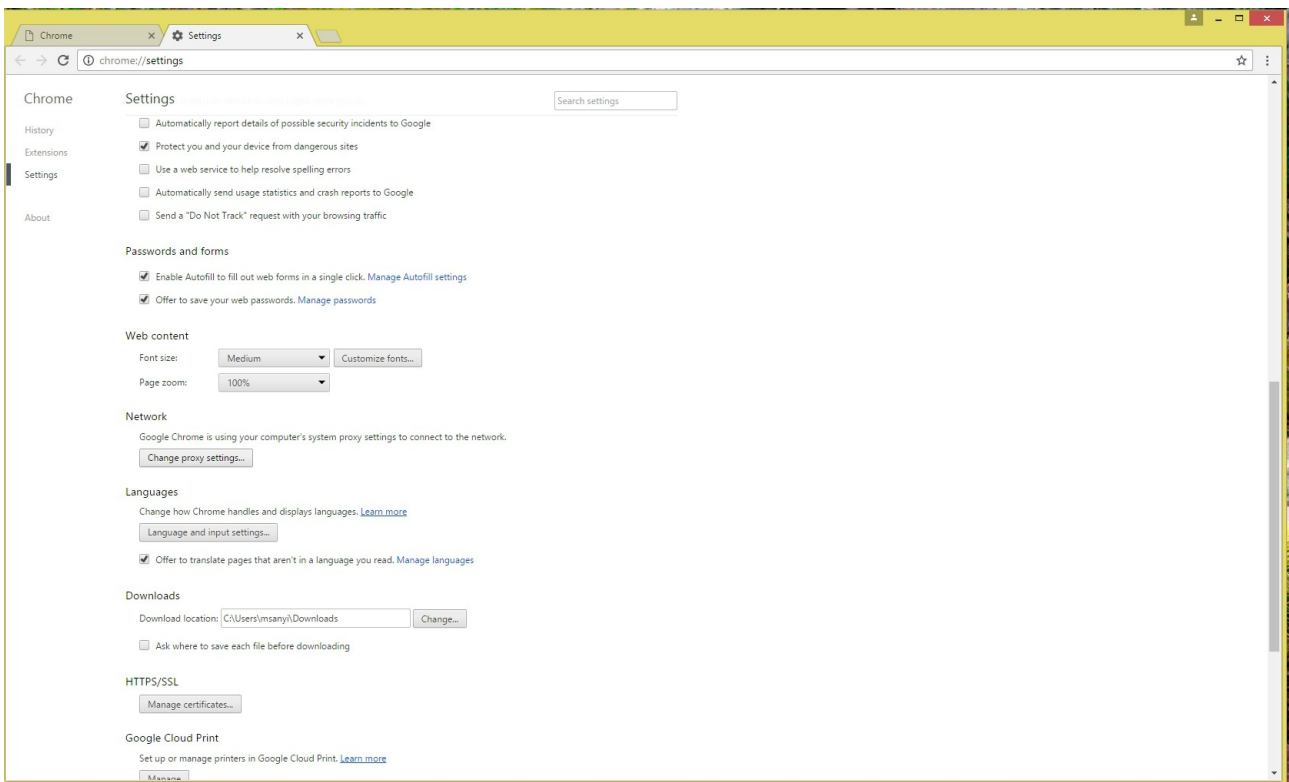
1. Open Google Chrome and select the three dot icon at the top right corner of the window.



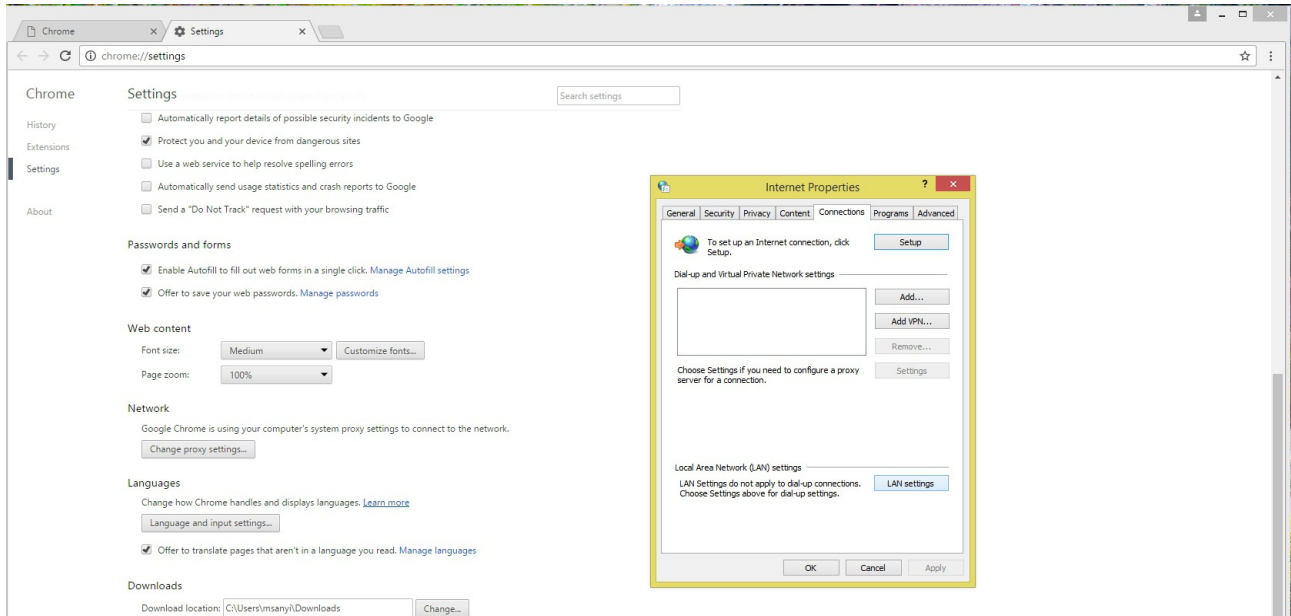
2. Select "Settings" from the menu. Chrome will start the Options panel, where you can configure the settings for Google Chrome.



3. Click at the bottom "Special settings" in the Options panel.

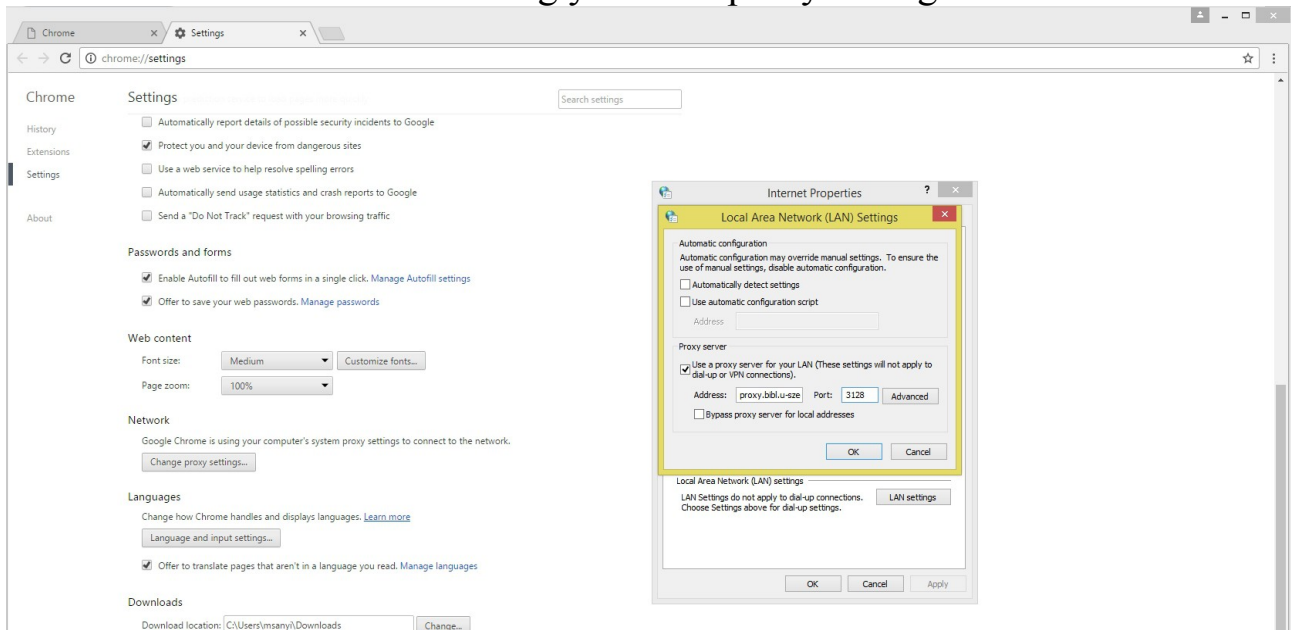


4. After the "Network" tab you see Chrome's network options. Click "Change proxy settings" under the Network tab to view the configured connection settings for Google Chrome. These options control how Chrome connects to the Internet.

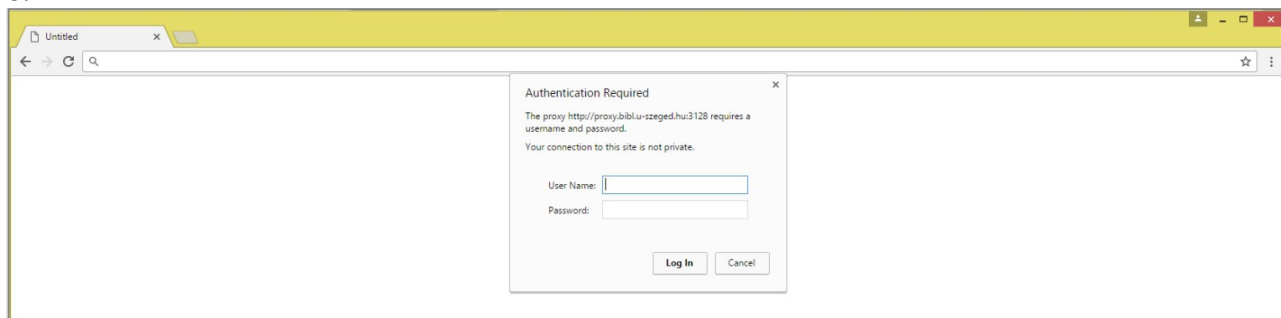


5. Select "Connections" and after "LAN settings" input the proxy information you need to connect with.

6. Tick "Proxy server" and input the proxy information you need to connect with. Address: **proxy.bibl.u-szeged.hu**, port: **3128**. Click "OK" to confirm your proxy settings. Click "OK" in the Options panel to close the configuration screen. You can now browse using your new proxy settings.



7. Type in www.bibl.u-szeged.hu. Then a new window will appear asking your username and password. For accessing the service you need a **user name** (the number on your student's or reader's card) and **password**, which is derivated from your birth date: the sequence of data (separated with a hyphen) and form are the following: day (two characters), month (month's name in English, first three characters, block letters), last two figures of the year (Example: if you were born on October 1, 1970 your password is 01- OCT-70).
- 8.



If you previously changed this type of your password you should use the latest version!

We refresh our database of registered users in every 24 hours, therefore this service will not immediately be available for you after your registration or change of your card.



Please note: links to full texts of the Web of Science and Pub Med will not or only partially will work. The full text of the article can be downloaded from the respective journal. List of journals is available from the Library home page: E-resources / E-journals, databases.

Questions, information on problems in connection with setting the proxy can be sent through the following email address: e-help@ek.szte.hu