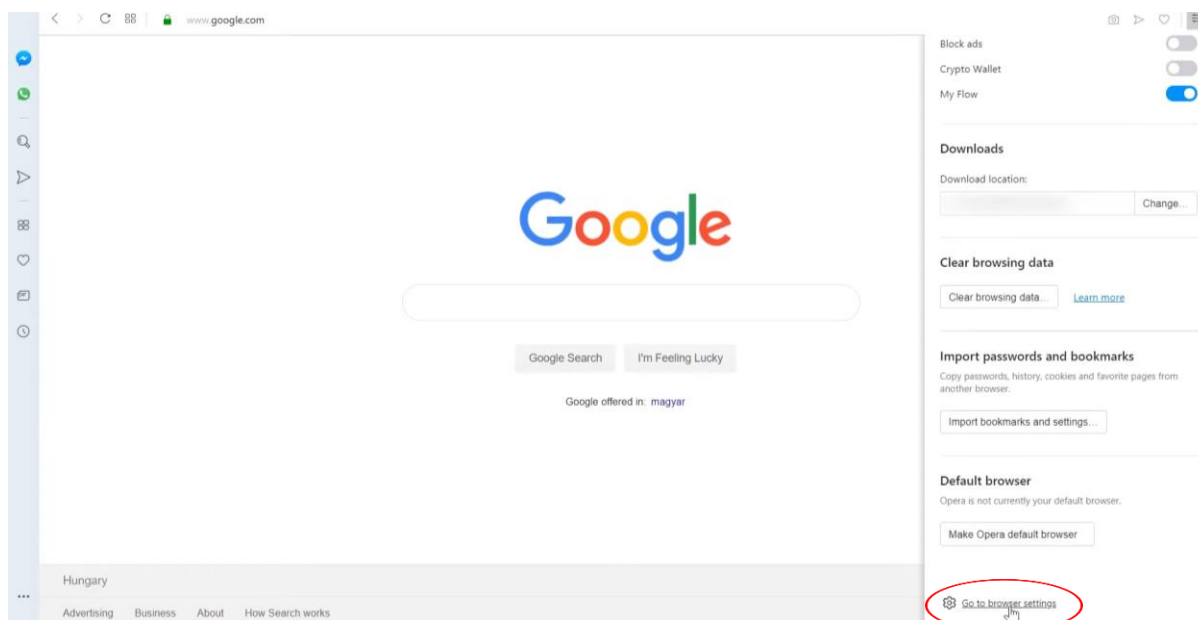


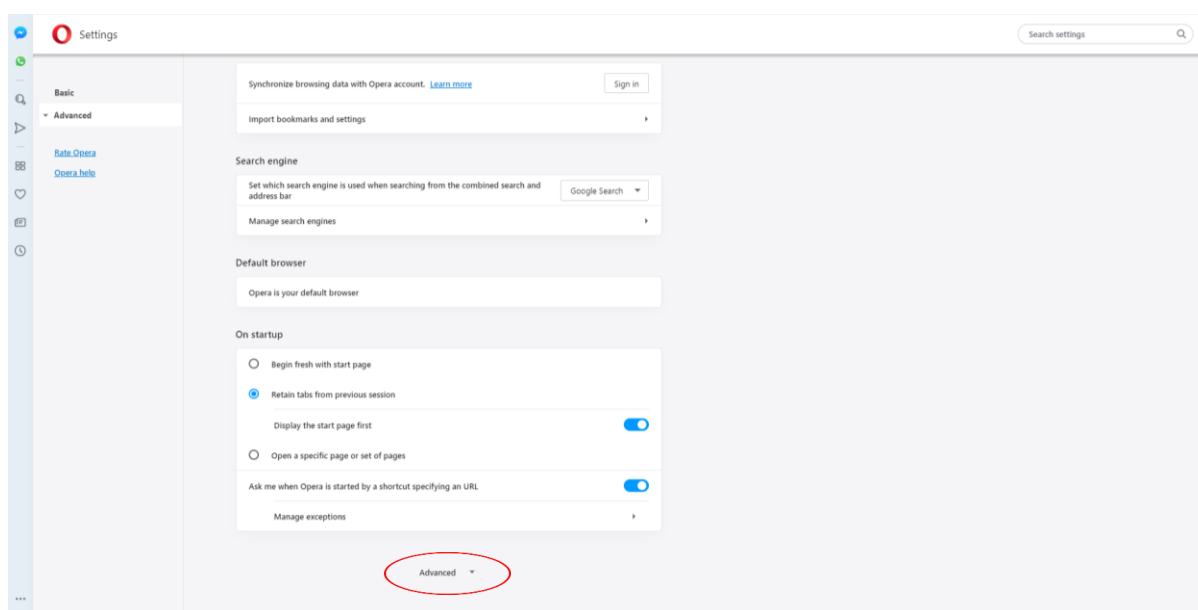
## PROXY SET-UP TO USE OUR E-RESOURCES FROM HOME.

### OPERA BROWSER (v.60)

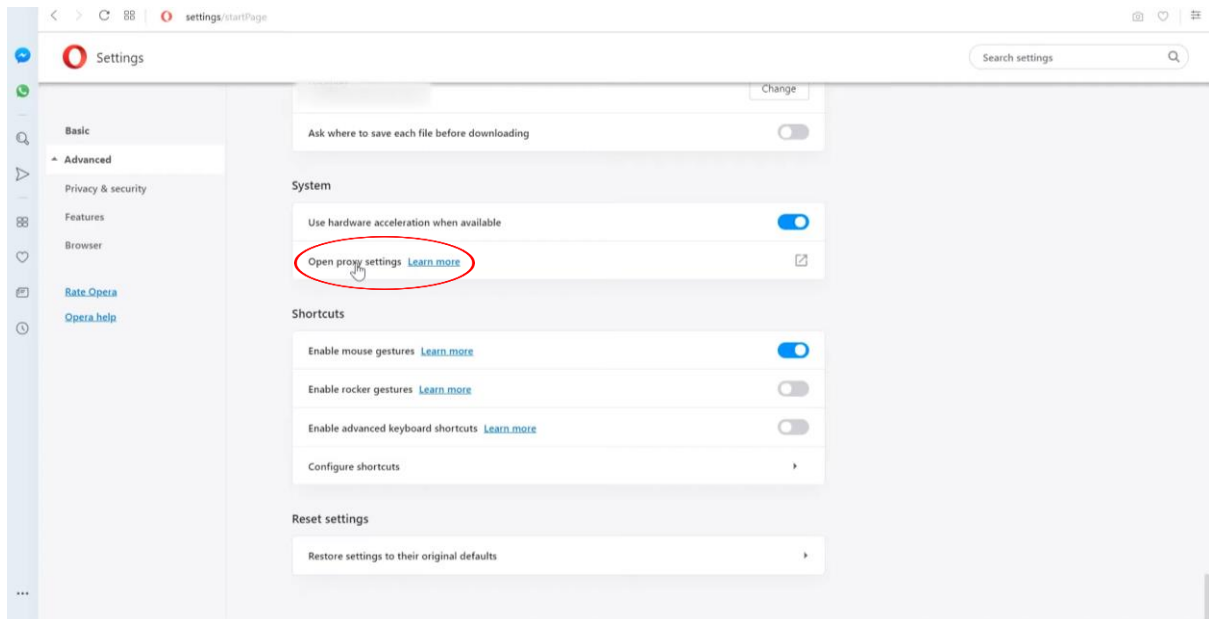
Open the Opera menu, scroll down and click ‘Go to browser settings’.



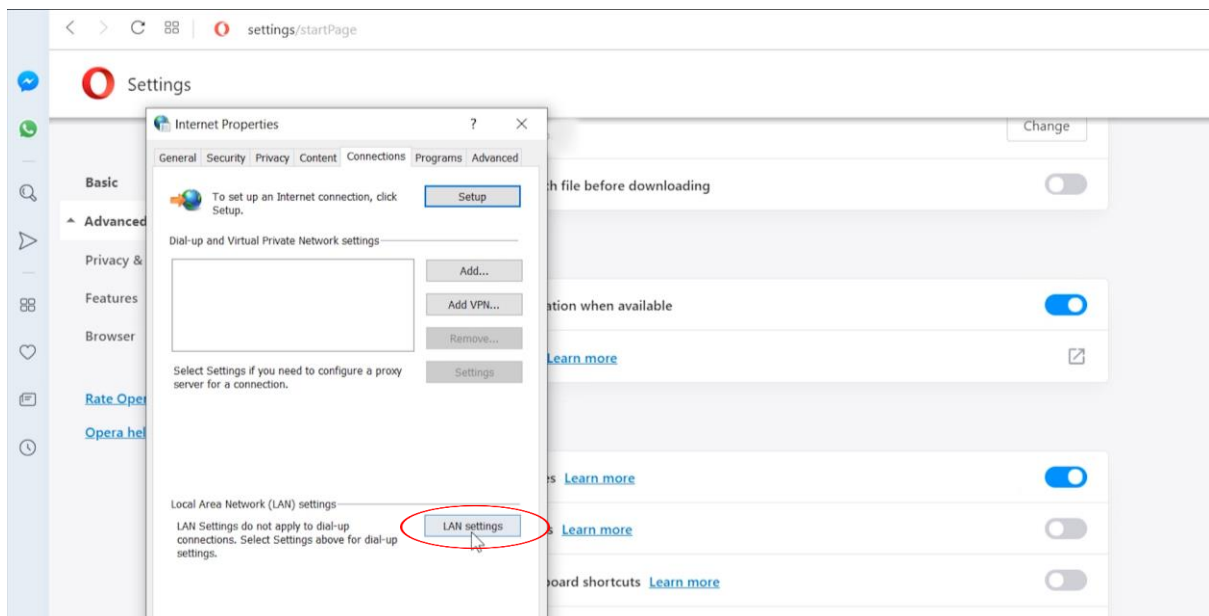
Scroll down and click ‘Advanced’ option.



Scroll down to the System section and click **‘Open proxy settings’**.

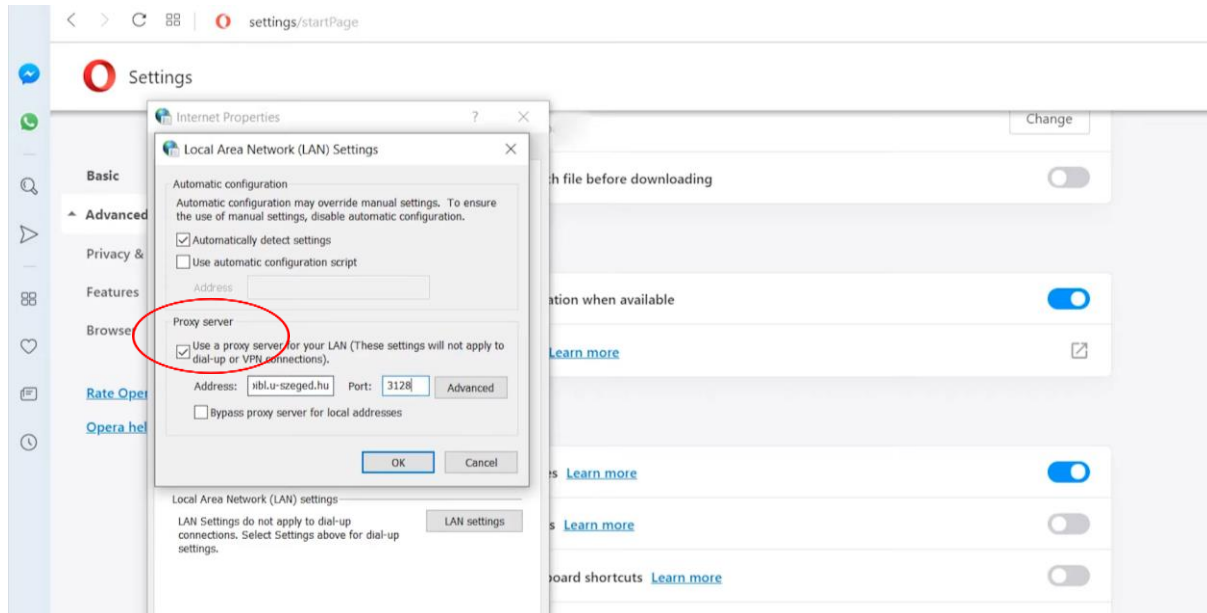


This will open your operating system’s network settings. Click and open **‘LAN settings’**.



In order to enable '**Proxy server**' check the box for '**Use a proxy server for your LAN...**' and enter the following:

The 'Address' is: **proxy.bibl.u-szeged.hu** and the 'Port' number is: **3128**



Click '**OK**' twice to save the new settings. Now open the library's website in the browser: [www.ek.szte.hu](http://www.ek.szte.hu).

An authentication window should pop up asking for your username and password.

**Please sign in**

The proxy <http://proxy.bibl.u-szeged.hu:3128> requires a username and password.

Your connection to this site is not private

Username:

Password:

The username is the number of your **student/library/Erasmus card**.



The password is auto generated from your date of birth in a given form: day (two characters), month (month's name in English, first three characters, capital letters) and the last two figures of the year.

DD-MMM-YY



Your password in our online catalogue is the same, so changing it will affect this one as well. The database of our registered users is refreshed in every 24 hours, therefore this service will not immediately be available for you after registration or in case you have to change your library card.

Your browser is now ready to use the library's e-resources.

Ask us if you need help or more information: [e-help](#).

### **Important!**

From the currently available browsers only the Mozilla Firefox has its own options for controlling the proxy settings, all the other browsers (Chrome, Opera, Edge, etc.) will modify the general Internet settings of your computer, so all the other installed browsers will be affected.

**We recommend to set up the proxy in Firefox to get access to the library's e-resources and use a different browser along with it to be able to use other public websites.**

With only one installed browser your only option is to turn the proxy settings off and on, depending on what type of site you want to use.

Good luck with your search.